

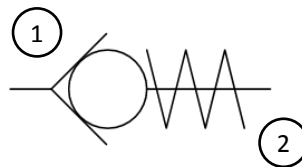
EVCC-B Series



Technical specification

Description:	Cartridge check valves
Size:	G 1/4", G 3/8", G 1/2" & G 3/4"
Flow rate:	20, 30, 50 & 80 l/min
Cracking pressure:	0.3, 1 & 3 bar
Pressure:	max. 350 bar
Fluid temperature:	-20°C to 110°C
Viscosity:	30 to 100 mm ² /s (cSt) at 40°C
Recommended filtration:	25 µm
Compatibility:	Suitable for hydraulic oils in compliance with DIN51524
Weight:	max. 0.082 kg

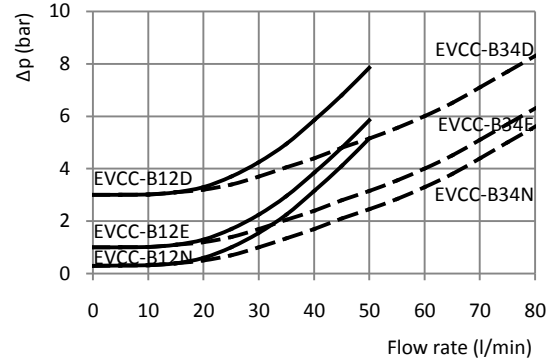
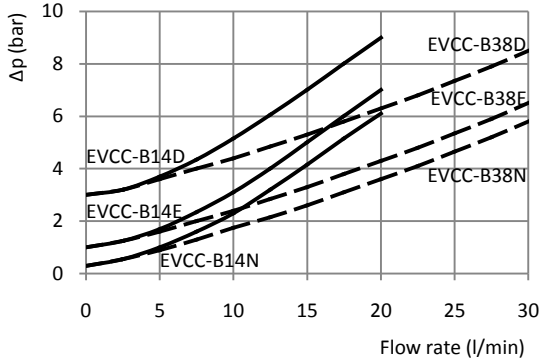
Hydraulic scheme:



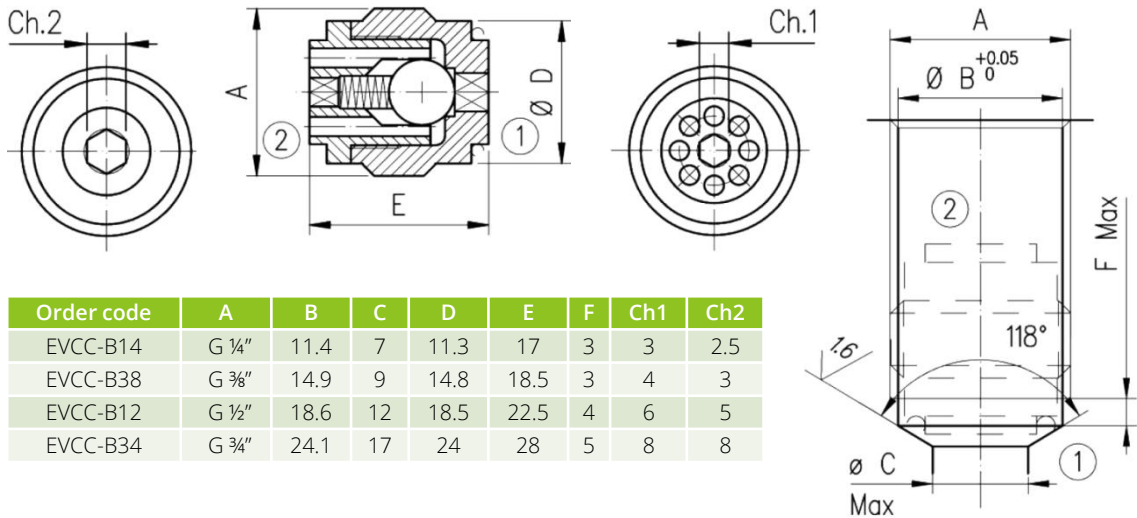
Order information

Order code	Size	Cracking pressure	Max. flow	Max. pressure	Locking torque	Weight	
EVCC-B	14 G 1/4"	N	0.3 bar	20 l/min	350 bar	6 Nm	0.013 kg
	38 G 3/8"	E	1.0 bar	30 l/min	350 bar	6 Nm	0.021 kg
	12 G 1/2"	D	3.0 bar	50 l/min	350 bar	10 Nm	0.041 kg
	34 G 3/4"			80 l/min	350 bar	20 Nm	0.082 kg
EVCC-B	12	E					

Pressure drop graphs (Δp)



Dimensional drawings



Order code	A	B	C	D	E	F	Ch1	Ch2
EVCC-B14	G 1/4"	11.4	7	11.3	17	3	3	2.5
EVCC-B38	G 3/8"	14.9	9	14.8	18.5	3	4	3
EVCC-B12	G 1/2"	18.6	12	18.5	22.5	4	6	5
EVCC-B34	G 3/4"	24.1	17	24	28	5	8	8

Technical specification subject to change without prior notice. Other specification on request. 2013/07/23